

CAUTION
KEEP OUT OF REACH OF CHILDREN.

SUMMIT 
ECOPAR 20 SC
HERBICIDE

ACTIVE CONSTITUENT: 20 g/L PYRAFLUFEN-ETHYL

GROUP G HERBICIDE

For the control of annual broadleaf weeds in winter cereals as per the Directions For Use Table.

- Excellent control of problem broadleaf weeds such as Erodium, Capeweed and Wild Radish
- Group G herbicide with no known resistance presenting an outstanding resistance management tool
- Maximise yield potential through effective early weed control (2 leaf to mid tillering)
- No plant back requirements
- Soft on subclover
- Easy to measure and mix SC formulation
- Easy to clean spray vat

SUMMIT  **AGRO**
AUSTRALIA

DIRECTIONS FOR USE: All States**RESTRAINTS:**

DO NOT tank mix Summit ECOPAR 20 SC Herbicide plus MCPA amine with any wetter, crop oil concentrates or blended oil/surfactant adjuvants. (see compatibility section)

DO NOT tank mix MCPA LVE with Summit ECOPAR 20 SC Herbicide.

DO NOT tank mix Summit ECOPAR 20 SC Herbicide plus MCPA amine treatments with selective grass herbicides.

DO NOT apply the tank mix of Summit ECOPAR 20 SC Herbicide plus MCPA amine before the two leaf crop stage.

DO NOT apply Summit ECOPAR 20 SC Herbicide plus MCPA amine by aircraft.

DO NOT apply if rain is expected within 6 hours of application.

DO NOT apply to weeds suffering from stress caused by conditions such as frost, drought, soil water logging etc.

CROP	WEEDS CONTROLLED	RATE	CRITICAL COMMENTS
Wheat, barley, triticale	Bedstraw (<i>Galium tricornutum</i>), Capeweed (<i>Arctotheca calendula</i>), Indian hedge mustard (<i>Sisymbrium orientale</i>), Long storks bill (<i>Erodium botrys</i>), Prickly lettuce (<i>Lactuca serriola</i>), Volunteer canola (<i>Brassica napus</i>), Volunteer lupin (<i>Lupinus</i> sp), Wild radish (<i>Raphanus raphanistrum</i>), Wild turnip (<i>Brassica tournefortii</i>)	400 mL plus 500 mL MCPA amine (500 g/L product)	Apply as a post-emergence treatment to actively growing weeds up to the 6 leaf stage and/or not more than 12cm in diameter and when the crop is between 2 leaves and mid-late tillering (Zadoks 12-25). Always tank mix with MCPA amine. Under favourable growing conditions some weed regrowth may occur. A follow up application of a suitable herbicide e.g., 2,4-D amine, may be required as part of a good weed management strategy.

**NOT TO BE USED FOR ANY PURPOSE, OR IN ANY MANNER, CONTRARY TO THIS LABEL
UNLESS AUTHORISED UNDER APPROPRIATE LEGISLATION.**

WITHHOLDING PERIOD:

HARVEST: NO WITHHOLDING PERIOD REQUIRED WHEN USED AS DIRECTED.

GRAZING AND FEEDING OF DRY FODDER/STRAW: NO WITHHOLDING PERIOD REQUIRED WHEN USED AS DIRECTED.

GRAZING: DO NOT GRAZE OR CUT GREEN FORAGE FOR STOCK FOOD FOR 14 DAYS AFTER APPLICATION.

GENERAL INSTRUCTIONS

Summit ECOPAR 20 SC Herbicide is an early post-emergence contact herbicide with rapid foliar uptake. Herbicide effects on susceptible weeds can occur within 1 to 7 days of application. Subsequent germinations will not be controlled. Summit ECOPAR 20 SC HERBICIDE should always be tank mixed with MCPA amine to improve the weed control spectrum compared to either product applied alone.

Compatibility

Summit ECOPAR 20 SC Herbicide plus MCPA amine is compatible with metsulfuron and triasulfuron.

Do NOT mix Summit ECOPAR 20 SC Herbicide with selective grass herbicides as grass weed control will be significantly reduced and excessive crop injury may occur. Increased crop injury is caused by the crop oil concentrates and oil/surfactant blends used with these grass herbicides. Instead, allow a 10 to 14 day interval between spraying Summit ECOPAR 20 SC Herbicide and grass herbicide applications. Do NOT add wetters, spray oils or oil/surfactant adjuvants to the tank mix of Summit ECOPAR 20 SC Herbicide plus MCPA amine. The addition of wetters, spray oils or oil/surfactant blends will greatly increase crop injury without any significant improvement in weed control. Prior to applying Summit ECOPAR 20 SC Herbicide, clean the spray tank to remove any wetters or adjuvants remaining from previous spray operations otherwise crop injury may result.

RESISTANT WEEDS WARNING

Summit ECOPAR 20 SC Herbicide is a member of the aryl triazolinone group of herbicides. Its mode of action is through a process of membrane disruption, which is initiated by the inhibition of the enzyme protoporphyrinogen oxidase. This inhibition interferes with the chlorophyll biosynthetic pathway. For weed resistance management, Summit ECOPAR 20 SC Herbicide is a Group G herbicide.

GROUP G HERBICIDE

Some naturally occurring weed biotypes resistant to Summit ECOPAR 20 SC Herbicide and other herbicides that inhibit the enzyme protoporphyrinogen oxidase may exist through normal genetic variability in any weed population and increase if these herbicides are used repeatedly. These resistant weeds will not be controlled by Summit ECOPAR 20 SC Herbicide or other herbicides that inhibit the enzyme protoporphyrinogen oxidase.

Since the occurrence of resistant weeds is difficult to detect prior to use, Summit Agro Australia Pty Ltd accepts no liability for any losses that may result from the failure of Summit ECOPAR 20 SC Herbicide or other herbicides that inhibit the enzyme protoporphyrinogen oxidase.

MIXING

Add half the required volume of water to spray tank and start agitation. Add the required amount of Summit ECOPAR 20 SC Herbicide followed by the MCPA amine. Metsulfuron or triasulfuron should be added last if including these in the tank mix. Add the remaining water. Maintain good agitation at all times until spraying is completed.

APPLICATION

Apply Summit ECOPAR 20 SC Herbicide plus MCPA amine as a broadcast application. Use conventional boom sprayers with either mechanical or bypass agitation. Spray equipment should be properly calibrated to ensure correct application. Use a spray

volume of 70 to 150 litres per hectare. This is particularly important on hard-to-control weeds. Use the higher volume if weed infestation is heavy or the crop cover is dense. The best application conditions are when soil is moist, weather fine and rain unlikely within 6 hours.

CROP SAFETY

Some herbicidal symptoms may appear on the crop in the form of leaf spotting due to environmental conditions. However the crop recovers quickly usually within 2-3 weeks of treatment .

SPRAYER CLEAN OUT

Do not allow the spray solution to dry in the application equipment. After application and before using the sprayer equipment for any other applications, the sprayer must be thoroughly cleaned. Applicators must ensure proper equipment clean-out for any other products mixed with Summit ECOPAR 20 SC Herbicide as provided on the other product label(s). Immediately following application, clean all equipment thoroughly with detergent or a spray tank cleaner and water as described below. Should residues of Summit ECOPAR 20 SC Herbicide remain in inadequately cleaned equipment, they may be released in subsequent applications and cause injury to crops.

1. Drain sprayer tank, hoses and spray boom and thoroughly rinse with clean water the inside of the spray tank, sprayer hoses, boom, and nozzles to remove any sediment or residues.
2. Fill the tank with clean water, add an alkaline detergent or boom cleaner (follow manufacturer's directions for use). Fill tank to capacity and operate the sprayer with agitation for 15 minutes to flush hoses, boom and nozzles.
3. Drain the sprayer tank, lines, and booms. Rinse the tank with clean water and flush through the hoses, boom and nozzles. Remove and clean spray nozzles, tips and screens.

PROTECTION OF CROPS, NATIVE AND OTHER NON-TARGET PLANTS

Do NOT apply under meteorological conditions or from spraying equipment that could be expected to cause spray to drift on to nearby susceptible plants, adjacent crops and pastures or on to wetlands, waterbodies or watercourses. Summit ECOPAR 20 SC Herbicide does not provide residual activity, therefore no crop rotational restrictions apply.

PROTECTION OF WILDLIFE, FISH, CRUSTACEA AND ENVIRONMENT

Very highly toxic to algae and aquatic plants. Do NOT contaminate streams, rivers or waterways with the chemical or used container.

STORAGE AND DISPOSAL

Keep out of reach of children.

Store in the closed original container in a cool, well ventilated area. Do not store for prolonged periods in direct sunlight. Triple or preferably pressure rinse containers before disposal. Add rinsings to spray tank. Do not dispose of undiluted chemicals on site. If recycling, replace cap and return clean containers to recycler or designated collection point. If not recycling, break, crush, or

puncture and bury empty containers in a local authority landfill. If no local authority landfill is available, bury the containers below 500mm in a disposal pit specifically marked and set up for this purpose clear of waterways, desirable vegetation and tree roots. Empty containers and product should not be burnt.

FIRST AID

If poisoning occurs, contact a doctor or Poisons Information Centre. Telephone 131 126 Australia-wide.

MATERIAL SAFETY DATA SHEET

Additional information is listed on the Material Safety Data Sheet for Summit ECOPAR 20 SC Herbicide. These can be obtained at www.summitagro.com.au. For emergency situations only, call 1800 033 111, all hours.

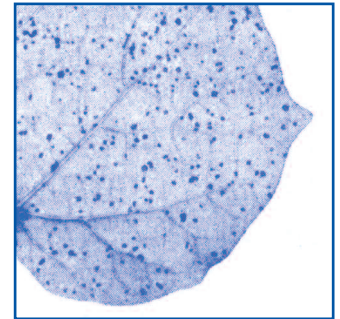
CONDITIONS OF SALE

Seller warrants that the product conforms to its chemical description and is reasonably fit for the purpose stated on the label when used in accordance with directions under normal conditions of use. No warranty of merchantability for a particular purpose, express or implied, extends to the use of the product contrary to label instructions, or under abnormal conditions.

How to get the best out of

Ecopar™ Herbicide

- Apply ECOPAR at 400mL/Ha + MCPA amine at 500mL/Ha
- Good spray coverage of the target is essential.
Higher water rates can assist in improving coverage especially where crop cover is dense and may shade weeds.
- As a guide, 30 to 40 droplets per cm² on the target are required.
- Ensure that application equipment is properly maintained and calibrated.
- Apply ECOPAR to actively growing weeds that are not stressed.



This is what good even spray coverage should look like.
(Picture not to scale)

